



1 - Contents of package

- MacR6 N
- 6 Torx T10 M12 screws
- 2 plastic tack rivets
- H-type silicone gel in syringe
- Watermeter adapter kit

2 - Necessary accessories

- Torx T10 screwdriver



- Smartphone or tablet with NFC support
- Data Loggers Configurator NFC application
- QR code redirects to Google Play store



- MicroSIM card



3 - SIM card assembly and slot sealing

1. Open the front cover (fig. 3.1).
2. Open the SIM card cap, take out the SIM holder (fig. 3.2).
3. Install the SIM card according to fig. 3.3. Insert the SIM holder into the slot.
4. Using the syringe, seal the surface of the SIM holder (see figure 3.4 and 3.5), being sure to fill the small plastic moat surrounding the SIM card and holder.
5. Put the SIM card cap back on, covering the SIM card.
6. Put the front cover onto the device then close it with the included Torx screws.

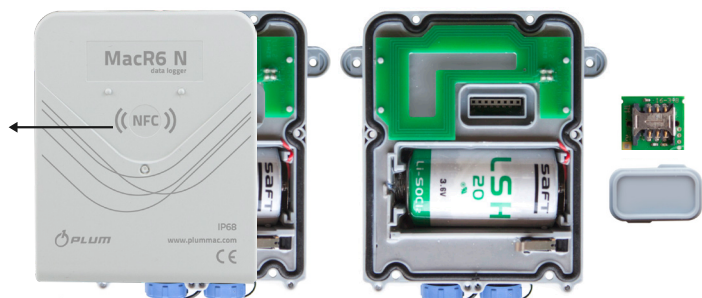


Fig. 3.1.

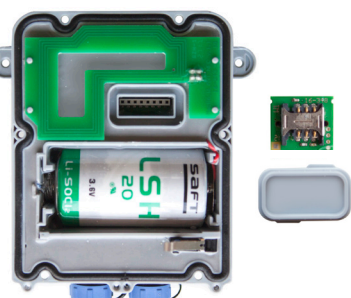


Fig. 3.2.

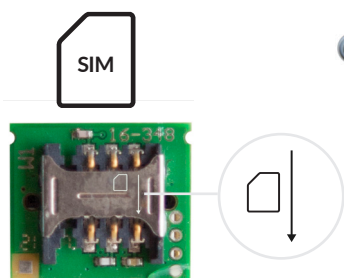


Fig. 3.3.

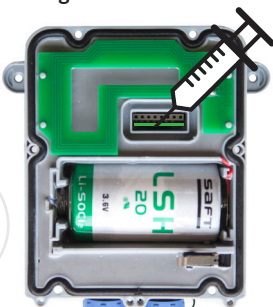


Fig. 3.4.

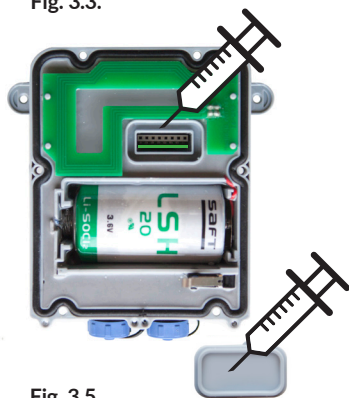


Fig. 3.5.

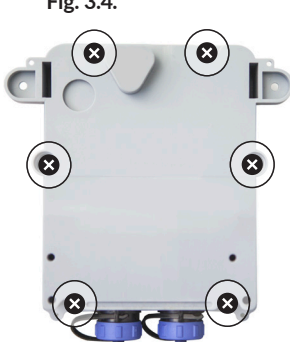
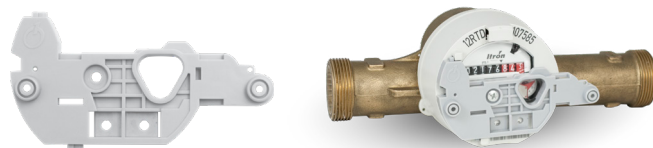


Fig. 3.6.

4 - Watermeter assembly

1. Select the adapter dedicated for the watermeter.
2. Install the adapter using the included screws.
3. Install the MacR6 N on the adapter using tack rivets (fig. 4.3.).

• ITRON



ITRON adapter is can be attached to a pipe using cable ties (fig. 4.1) or to the wall using pegs (fig. 4.2).

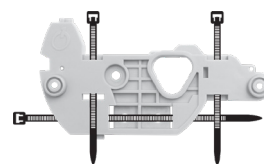


Fig. 4.1.

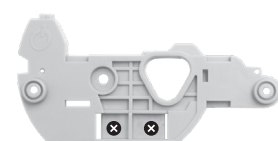
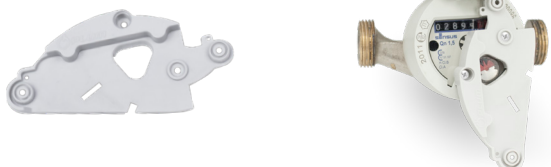


Fig. 4.2.

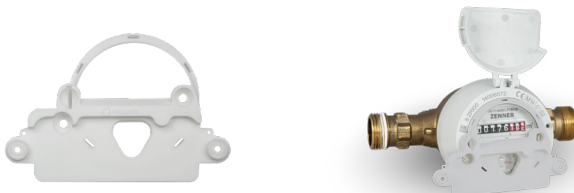
• MADDALENA



• SENSUS



• ZENNER



• DIEHL



INSTALLATION

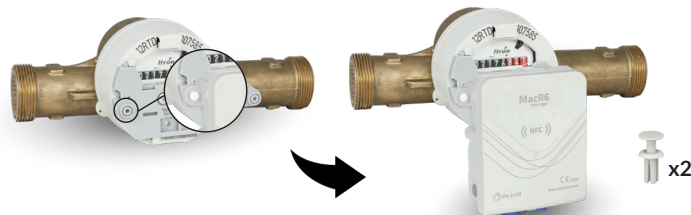


Fig. 4.3.

5 - Connection with MacR6 N

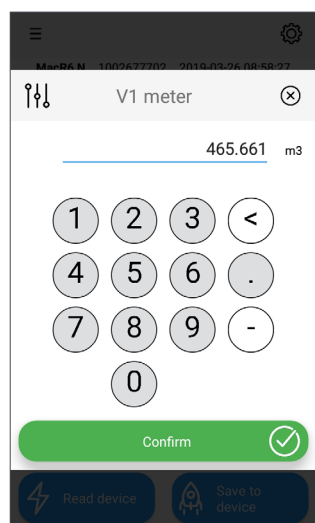
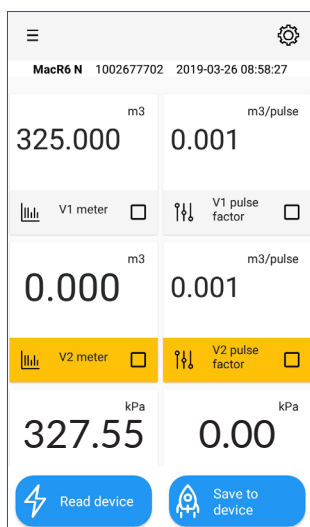
1. Turn on the NFC on smartphone or tablet.
2. Start ConflIT - data loggers application, choose NFC communication and close phone to the MacR6 N.

i There is no specific position for phone placement. It depends on location of NFC antenna inside the smartphone.

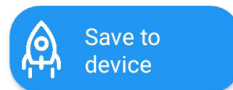


6 - Configuration of parameters

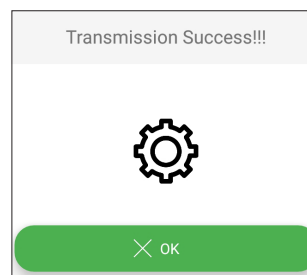
1. Take the smartphone or tablet off of the MacR6 N after the readout has been generated.
2. Enter data into the watermeter- pulse factor, counter value, serial number. Enter the PIN to the SIM card. By clicking "More parameters" you are able to set advanced values such as registration period, data server address, or installation phone number.



3. Save the configuration. Tick the Save to device button and close smartphone to MacR6 N.



4. Successful saving will be indicated by the message below.



When programmed - device will go to water meter recognition mode what is indicated with proper message in main window.

⊗ Water meter detection in progress.

Water meter detection is possible in few seconds when water flow is present. When recognized app will show proper information.

⊗ Water meter detected, adjustment in progress.

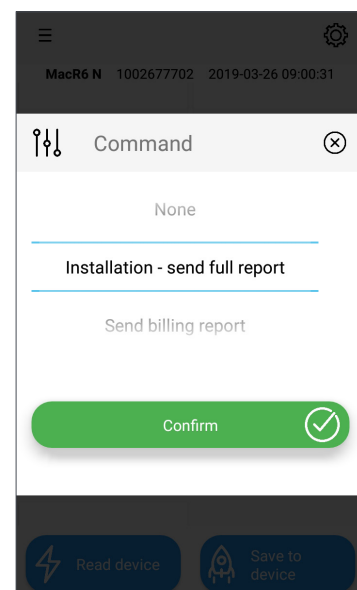
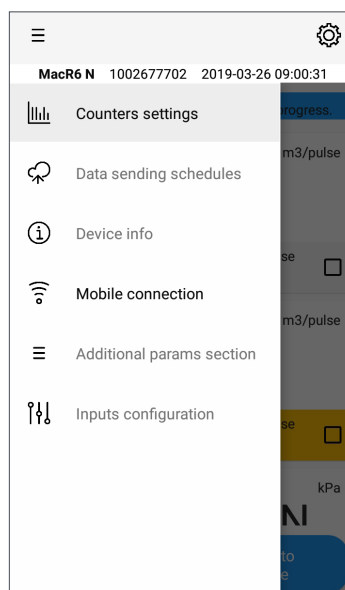


When detection takes too much time please proceed with installation once again.

DEVICE IS CONFIGURED AND READY TO USE

7 - eWebtel.com

1. Connect with MacR6 N.
2. Go to MOBILE CONNECTION tab using menu on the left side. Pick COMMAND and choose INSTALLATION - SEND FULL REPORT.
3. Close the smartphone to MacR6 N to save configuration.



PLUM Sp. z o.o.

Wspólna 19, Ignatki, 16-001 Kleosin, Poland

Technical Department

tel.: 85 749 70 08, fax.: 85 749 70 14, e-mail: serwis@plum.pl